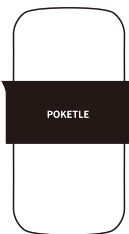


## ■ Instruction Manual ■



POKETLE vidro calm  
Glass Tea Set

Thank you for purchasing our product.  
Please read this instruction manual carefully and use your POKETLE correctly. Keep this instruction manual for future reference.

## ▲ Precautions ▲

- Glass is a breakable material. Please handle with care when cleaning and using it.
- Although this product is manufactured with safety in mind, it may be damaged by scratches, cracks, chips, etc. when subjected to physical impact. Please handle with care when using, storing, and cleaning.
- In the case that the glass has even small chips or cracks, its strength may be significantly reduced. If left unattended, it may break just by holding it in your hand, so please be careful.
- Do not drop, bump, or otherwise subject the product to strong shocks, as this may cause damage.
- Do not hit or scrape the inside of the glassware strongly with a metal spoon. It may cause damage.
- Do not turn upside down when the cup is set as hot water, may leak out.
- Do not scratch the filter part with a knife or other sharp object.
- Please set the filter firmly and deeply into the cup size. Failure to do so may cause leakage of the contents.
- Do not scratch the filter part with a knife or sharp object.
- After use, please wash the product as soon as possible to prevent odors and stains from sticking to it.
- Do not use abrasive cleaners, metal scrubbers or cleanser detergent.

## ■ Before Use ■

- Due to the product's specifications, there may be small stains on the inner surface. When using the product for the first time, wash it well with a soft sponge and kitchen neutral detergent before use.
- Please make sure that the product is not deformed, scratched, cracked, chipped, or otherwise damaged before use. If there are any problems, please do not use the product and contact the distributor.
- It may be damaged by scratches, cracks, chips, etc. when subjected to physical impact. Please handle with care when using, storing, and cleaning.
- Due to the manufacturing process and material characteristics, there may be individual differences in shape, size, and weight, and small bubbles may be present on the surface or inside the glass.
- In the case that the glass has even small chips or cracks, its strength may be significantly reduced. If left unattended, it may break just by holding it in your hand, so please be careful.
- If the glass is broken, please be aware that the fragments may scatter violently as small pieces.
- Please note that we shall not be responsible for any loss, damages, injury caused by wrong use.

## ■ General Care ■

- Before use, please wash it by a soft sponge with a mild kitchen detergent.
- When the product is very dirty, use a diluted solution of kitchen bleach. Be sure to follow the instructions for kitchen bleach. Rinse thoroughly with water after bleaching.
- You can use the dishwasher and dryer. Please read the instruction manual for your dishwasher and dryer carefully.
- Please do not use chlorine-based bleach, thinner, benzene, metal brushes, polishing powders or cleaners.
- After washing the product, wipe off residual water to dry it immediately.
- For hygienic purposes, clean the product the same day it is

## ▲ Warning ▲

- Do not use the product for any purpose other than its intended use.
- This product can be used for boiling water and microwave.
- Do not use it for anything other than drinks.
- Do not use in an open flame, oven.
- Do not warm without water. It is very dangerous and may cause damage.
- Do not heat or cool the product rapidly, as this may cause the glass to break. Do not touch with a wet cloth or place in a wet place while hot. Please avoid freezing in the freezer.
- Only pot and cup can be heated in the microwave. Remove the filter when using in the microwave.
- Please take care to avoid burns. Wipe off water drops of the glass surface before use. The glass may break if it is used with water drops.
- Do not place near open flames, stoves, ovens, or other open sources of heat.
- Do not turn upside down when the small glass is set as hot water may leak out.
- Keep out of reach of children. Be careful with tampering.



Dishwasher Safe



Microwave Safe  
(Excluding Filter)



Oven  
▲ DO NOT USE

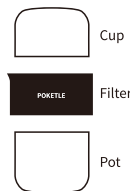


Open Flame  
▲ DO NOT USE

- used.
- For long-term storage, make sure the bottle is completely clean and dry before storing.

## ■ Features ■

- You can enjoy pouring tea and its taste because this set consists of a heat-resistant glass pot and cup and a silicone filter.
- It is compatible with various types of tea, such as green tea, black tea, hojicha, and Chinese tea, bringing out the best flavor of each.
- You can warm the cup while steeping tea leaves, enhancing the flavor of your tea even further.
- Its compact and space-saving form is attractive, fitting well in any shelf.
- The filter has a wave pattern design, which makes it easy to hold even with hot tea inside, you can enjoy tea comfortably.
- The thick glass provides a high-quality feel and a cute, rounded design.



Product name : Glass tea set

Capacity : 1 cup of tea (approx. 120ml)

Use category: For use in boiling water & microwave

Maximum temperature differential : 120°C

Size: approx. W8.5×D8×H14cm

(Pot & Cup) Borosilicate glass

(Filter) Silicone rubber (Up to 230°C)



Platinum Silicone Dishwasher Safe

The part of the product specification would be changed without notice.  
Therefore, the actual products may differ slightly from images of instruction manual.

## Contact information for inquiry

If you have any questions about our products or require replacement parts, please contact us at the following address.



poketle.com

DESIGN WORKS ANCIENT Co., Ltd.  
12-7 Hatsuda, Terado-cho, Muko, Kyoto, Japan  
mail: info@poketle.com

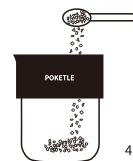
Product model number  
DWAEV009

Control number  
Lot No.310323

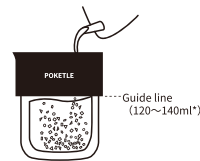
MADE IN CHINA  
DESIGNED IN KYOTO.JAPAN

## ■ How To Use ■

1. Put tea leaves
2. Pour hot water

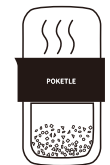


4g\*

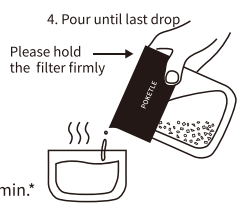


Guide line  
(120~140ml\*)

3. Cup over the filter



1~3 min.\*



4. Pour until last drop  
Please hold the filter firmly

Enjoy your tea time!

\*For reference, amounts and extraction times are depending on kind of tea. Please adjust according to the type of tea and your taste.