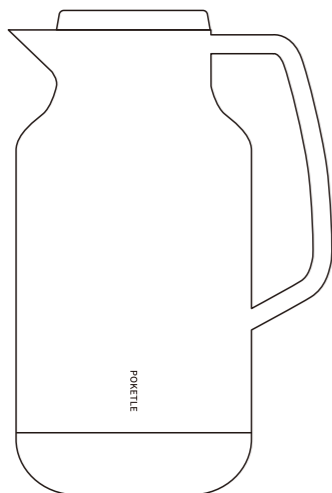


## User's manual

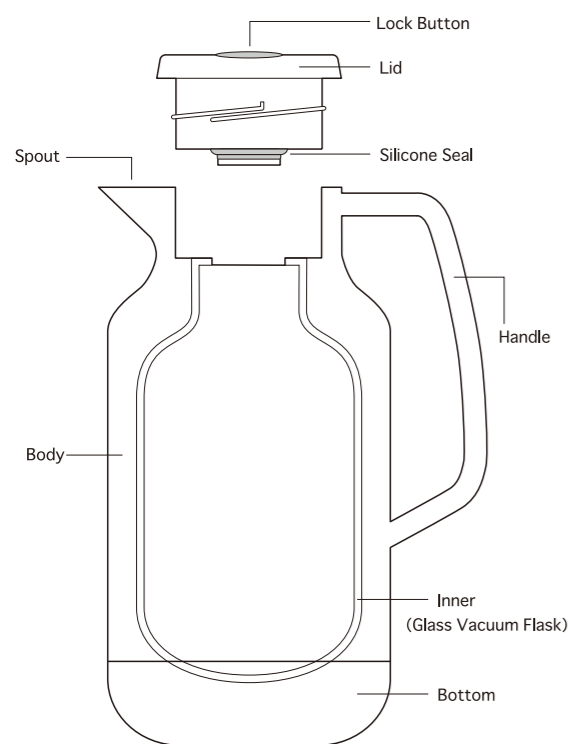


## POKETLE vidro mahobin 1000

Glass Vacuum Carafe 1.0L

Thank you for purchasing this product. Please read this user's manual carefully and use the product properly. Please keep this user's manual in a safe place so that you can re-read it at any time.

### Name of each part



**⚠ This product is made of glass. Please handle with care. ⚠**

### Before use

- Although every effort has been made to ensure quality, please check this product for deformation or damage before use. If any defect is found, do not use the product and contact the distributor.
- Although this product is manufactured with safety in mind, it may be damaged when subjected to physical shock. Please handle with care when using, storing or cleaning.
- Before use, remove the silica gel inside the inner glass and wash it well with a soft sponge and kitchen detergent.
- Do not wash the entire body and lid. Water may enter the interior, resulting in malfunction or damage.
- Dishwasher/dryer use is not allowed.
- The light pink color of the inner bottle is due to the coating on the outside to improve heat and cold retention. Please use with confidence.
- There are linear and wavy marks on the side of the body, which are caused by the resin molding process. This does not affect the quality of use.

### Safety Precautions Please be sure to observe

● The following indicator marks explain the danger and degree of danger that may result from incorrect.

<b>⚠ Warning</b>	The contents may lead to death or serious injury.	<b>⚠ Caution</b>	The contents may result in minor injury or property damage.
------------------	---	------------------	---

● The following symbols explain what you are required to observe.

<b>🚫 Prohibition</b>	It is a "prohibited" content that should not be done.	<b>👉 Execution</b>	This is the "mandatory" content that must be implemented.
----------------------	---	--------------------	---

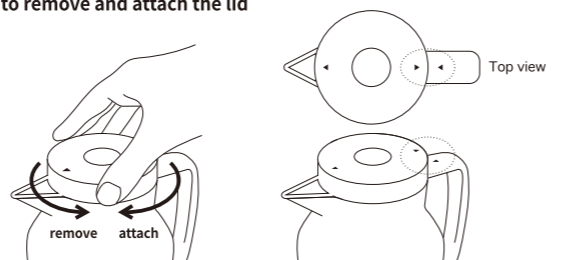
### Warning

- 🚫 **Keep out of reach of infants. Also, be careful not to tamper with the product.**
- 🚫 **Never use it for anything other than keeping beverages warm or cold.**
- 🚫 **Do not heat or cool rapidly.**  
Do not put hot food into the bottle immediately after putting cold food into it, and vice versa. Doing so may cause damage to the inner bottle.
- 🚫 **Never put it on fire or heat it in a microwave oven.**  
Failure to do so may cause a fire.

### How to use

When using the product for the first time, wash each part thoroughly according to the care instructions.

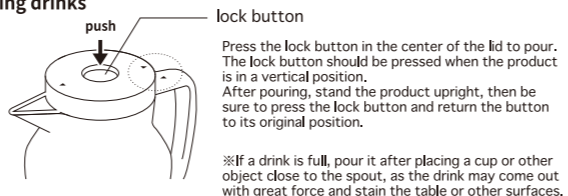
#### How to remove and attach the lid



Attach and remove the lid with your hand on the handle.

When attaching the lid, be sure to align the ▲ mark. Please make sure to close the lid all the way to the end.

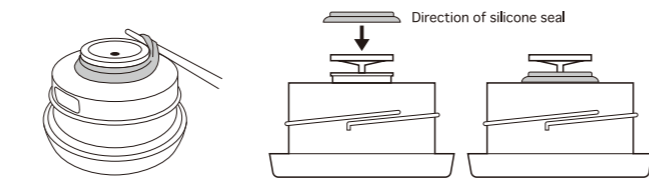
#### Pouring drinks



Press the lock button in the center of the lid to pour. The lock button should be pressed when the product is in a vertical position. After pouring, stand the product upright, then be sure to press the lock button and return the button to its original position.

※If a drink is full, pour it after placing a cup or other object close to the spout, as the drink may come out with great force and stain the table or other surfaces.

#### How to remove and attach the silicone seal



Remove it by hooking it onto a chopstick or other object with a rounded, thin tip.

Install with the lock button depressed.

### Safety Precautions Please be sure to observe

#### Warning

- 🚫 **Never put in the following items**
  - ① Dry ice, carbonated drinking water, etc.  
This is dangerous because the internal pressure will increase and the stopper will not open or the contents will blow out.
  - ② Milk, milk beverages, fruit juices, alcohol, etc.  
If left unattended, the contents may spew out due to decomposition, alteration, or fermentation, or the lid may not open.
  - ③ Fruit pulp, tea leaves, etc.  
Failure to do so may cause clogging, leakage, or other malfunctions.

#### Caution

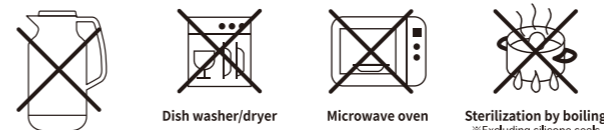
- 🚫 **Do not use the product near a fire, such as a stove or stove top, or in direct sunlight. Doing so may cause deformation or discoloration.**
- 🚫 **Do not transport the product in a car or other vehicle.**
- 🚫 **Do not knock over, drop, hit, or subject to strong shock or vibration.**  
The inner bottle may break or the contents may leak, causing burns and stains.
- 👉 **When carrying, hold the handle and carry it upright.**  
Do not tilt or hold it sideways to carry it. The contents may leak and cause burns or stains.
- 🚫 **Do not lay it on its side or roll it over with drinks in it.**
- 🚫 **Do not look into the bottle.**  
If the inner bottle should break, debris could get into your eyes and cause serious injury.
- 👉 **If the inner bottle is damaged, discontinue use immediately.**  
Fragments can get into the drink and cause serious injury if consumed.
- 🚫 **Do not stir the drink or apply a metal rod or spoon to the inner bottle.**  
The glass inside the bottle may break, causing injury.
- 👉 **When adding ice, pour in the drink first, then tilt the main body slightly and gently slide the ice in.**  
If ice is added too vigorously, the glass of the inner bottle may break.
- 🚫 **If ice is added, do not shake the unit hard.**  
Ice hitting the inner bottle may cause glass breakage.

### How to care

- 👉 **To keep the product clean, be sure to clean it before the end of the day after use.**
- 👉 **Do not leave drinks in the bottle for long periods of time and drink them as soon as possible.**  
This can lead to rotting and alteration of the quality of the product. In addition, the rotting may cause gas to be released, increasing internal pressure, which may prevent the lid from opening, cause the lid to pop off, or cause drinks to gush out, resulting in injury or staining other items.
- 🚫 **Do not soak washing and whole washing the lid and body.**  
Water can seep in through the bottom or gaps, causing malfunction or damage.
- 🚫 **Do not boil. Also, do not use a dishwasher/dryer.**
- 🚫 **Do not use chlorine bleach, thinner, benzene, metal scrubbers, polish, cleanser, or chemical rags.**
- 👉 **To clean the lid and inner bottle, wash them with a soft sponge with neutral kitchen detergent diluted in warm water, rinse them, wipe them dry, and dry them well.**
- 👉 **For the outside of the main unit, wipe off any dirt with a soft cloth dampened with lukewarm water and neutral kitchen detergent, then wipe with a soft cloth dampened with lukewarm water and wring it out tightly.**
- 👉 **If water gets into the lid, shake it well up and down with the lock button pressed to drain the water.**
- 👉 **If not used for a long period of time, wash it clean and dry it thoroughly before storing it away from high temperatures and humidity.**

#### Care of flakes

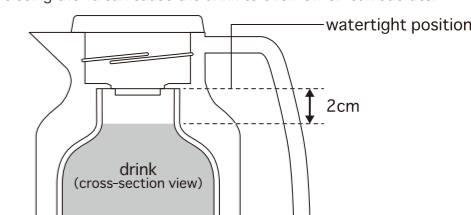
When hot water is placed inside, you may see sparkles floating in the hot water or white substance adhering to the inner glass. This is called "flakes" and is a compound of mineral components in the water and is not harmful to the human body. If it cannot be removed by normal care, pour hot water with 10% vinegar added inside and leave it for 30 minutes to 1 hour without the lid, then clean the inner walls of the inner bottle with a soft sponge or bottle brush before use.



Do not whole washing    Do not use    Do not use    Do not use

#### Caution

- 🚫 **Do not allow hot kettles, kettles, etc. to touch the main unit.**  
There is a risk of deformation of the body or tipping over, resulting in burns or injury. Be careful not to tip over when pouring drinks.
- 👉 **Close the lid securely. Close the lid securely until it is secured.**
- 🚫 **Do not carry by the lid.**
- 👉 **Check that the silicone seal is properly installed on the lid.**  
If not fitted correctly, the drink will leak when tilted even when locked.
- 👉 **Be sure to remove the lid before pouring in the drink.**
- 🚫 **Do not press the lock button while the unit is tilted.**  
Drinks can overflow suddenly, causing burns and stains.
- 👉 **When pouring a hot drink, pour it slowly without tilting it suddenly.**  
There is a risk of burns, etc., if the drink is spurted out too vigorously.
- 👉 **When hot drinks are added, be sure to observe the following points**
  - Do not drink directly. Doing so may cause burns.
  - Never press the lock button while tilted or with your face close to it. The internal pressure may cause the drink to come out with a force that could result in burns or other injuries.
  - When removing the lid with a hot drink in it, press the lock button once to release the steam before removing the lid. If the lid is removed with a hot drink in it, press the lock button once to release the steam and then remove the lid.
- 👉 **Do not fill drinks to the full water level, but only to the position shown in the figure.**  
Overfilling and closing the lid can cause the drink to overflow or leak out later.



- 🚫 **Do not modify or attempt to disassemble and repair the product without the instructions.**  
Failure to do so may cause malfunctions or accidents.
- 🚫 **Do not use products with reduced heat or cold retention.**  
The inner bottle may be damaged, or the outside of the body may become hot when hot drinks are added, which may result in burns or injury.

### Replacement or purchase of parts

- If damaged, replace with new parts (for a fee).
- Please confirm the part number of the product and purchase it by the following method.

Part Name	Item's stock number	
Inner glass	DWAHHT02	① Online Store...POKETLE ( <a href="https://poketle.com/">https://poketle.com/</a> )
Silicone Seal	DWAHHT03	② Store...Please contact the dealer where you purchased this product.
Lid	DWAHHT04	

The silicone seal is a consumable item. Periodic replacement is recommended. If the packing becomes noticeably dirty, loose, or has an unpleasant odor, please purchase a replacement silicone seal from the above list.

**⚠ Please handle the inner glass with care to avoid injury in the event of breakage.**

- No compensation will be provided for any damage resulting from improper use.
- When discarding this product, please dispose of it according to the disposal method of your local government.
- Part of the specifications are subject to change without prior notice. Therefore, please note that the contents and illustrations in the instruction manual may differ from the actual product.

Product name : Glass vacuum carafe  
Actual capacity : 1.0 L  
Heat-retaining effect : 73°C (10 hours)/61°C (24 hours)  
Cold-retaining effect : 6°C (10 hours)  
Size : approx. Φ124×W170×H250mm  
Material  
(Body) Polypropylene  
(Inner) Borosilicate glass  
(Lid) Polypropylene  
(Seal) Silicone rubber



#### Contact us

DESIGN WORKS ANCIENT Co., Ltd.  
12-7 Hatsuda, Terado-cho, Muko, Kyoto, Japan  
mail: info@poketle.com

MADE IN CHINA  
DESIGNED IN KYOTO, JAPAN



Product Number)  
DWAHHT01