

Instruction Manual



POKETTE CLASSIC 350

Please read this instruction manual carefully and use your Pokette correctly. Keep this instruction manual for future reference.

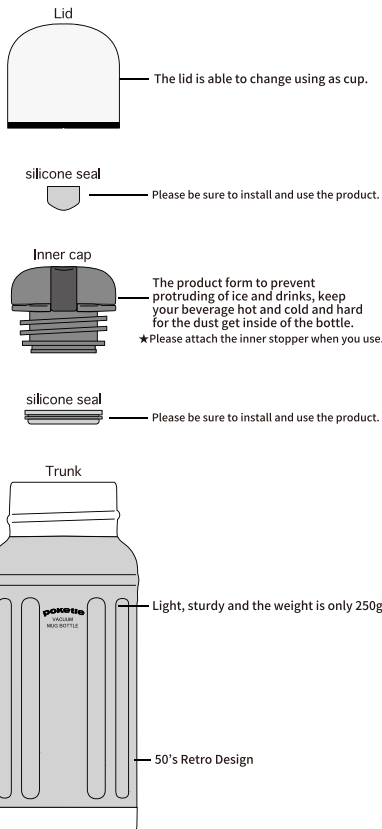
Do not put in the following substances

1. Dry ice, carbonated drinks, etc.
Internal pressure may build, causing the plug to clog and the contents inside to leak out.
2. Milk, milk-based drinks, fruit juice
If left in the container, it may spoil or deform the product.
3. Substances with salt content, such as miso or other soups
Such contents can still cause rusting even though the inner bottle is made of stainless steel.
4. Fruit pulp, tea leaves and alcohol etc.
This may cause problems such as clogging or leakage.

Before Use

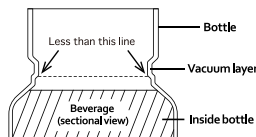
- Although we're very thorough in the quality of the product, please make sure that the product is not deformed or damaged before use. If there are any problems, please do not use the product and contact the distributor.
- Although this product is manufactured with safety in mind, it may be damaged by physical shock. Please handle with care when using, storing, and cleaning.
- There may be a slight odor due to the nature of the materials, but this is not considered a defect.
- Do not use the product for any purpose other than keeping liquids warm or cold.
- Before use, use a soft sponge and wash it thoroughly with a mild kitchen detergent.
- Do not wash or disinfect at high temperatures. (※Silicone seal can be disinfected with boiling water.)

Product Features



Precautions

- Do not use the product for any purpose other than its intended use.
- Do not use on direct heat, on a stove, in an oven, or on a grill. Do not place in the refrigerator or freezer, etc.
- Do not heat it in a microwave. Sparks may fly, causing injury or destroying the microwave.
- Keep out of reach of children. Be careful with tampering.
- The container is not dishwasher safe. It may affect the functionality of the product as well as cause discoloration and rusting due to deformation.
- For safety reasons, if a crack or other damage occurs, please stop using the product immediately.
- Please be careful not to get injured when handling the product if it is damaged.
- Please note that we shall not be responsible for any loss, damages, injury caused by wrong use.
- Do not disassemble and attempt to repair it. It may damage the container and cause accidents.
- If you intend to dispose of this product, do so in accordance with the method of disposal approved by your local residential area.
- Do not dispose of the product in any way other than the specified method.
- The beverage should be filled up to the position indicated. It is dangerous to put too much inner cup will be hard to close and open, inside will be filled.

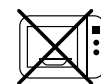


- When pouring in liquid from a kettle, do not let the spout touch the mouth.
- Be careful with knocking over the bottle, as spillage may burn or scald the user.
- Please attach the inner stopper and close the lid securely before use. Make sure that the silicone packing is properly attached to the inner cap and lid. Otherwise, the beverage may leak.
- Be sure to remove the lid and inner cap before pour the beverages.
- To be sure closing the lid and inner cup.
- If the lid is not closed properly, vibration and impact can cause the plug to loosen and the beverage to leak.
- After installing the lid, tilt the product to check for leakage.
- When doing so, hold it over the sink and be careful not to burn yourself or soil your clothes.
- Do not close and open with the bottle tilted. Liquid goes out too much then will be cause of a burn.
- If suddenly tilting the bottle, liquid go out too much then will be cause of a burn.

- Condensation may occur on the lid and inner cup if there is a temperature difference between the outside temperature and the drink when the drink is poured.
- For storing ice, make sure the pieces are small enough to be put in without resistance. Otherwise, it can cause leaks and poor insulation.
- Do not shake the bottle immediately after pouring a hot drink. The internal pressure will rise, making it difficult to open the bottle, and it may make a noise when opened.
- If the bottle is left with a hot drink for an extended period of time, the internal pressure will drop, making the bottle cap difficult to open and causing it to make noise when opened.
- Do not force to push even if the closing and opening button of inner cup is hard to push. Try to loose by turning once again, then push the closing and opening button again close inner cup with a lid opened.
- Do not tilt and shock the bottle, when you close inner cup. Liquid goes out too much then will be cause of a burn.
- When the bottle is tilted or turned upside down, a small amount of it left in the lid and it may drip when the lid is opened or closed. Please open and close the lid softly not to make a mess on your clothes.
- When closing the lid, wipe off water drops from the inner cap. Otherwise, it may leak.
- Leakage or overfilling can cause burns and soil other items, be careful when handling the product.
- When carrying a drink, transport it with the bottle standing straight and the lid side up.
- Carrying the product while lying down can cause leakage.
- If use the lid as cup, wipe off water well then close the lid. Confirm if the lid is closed well.
- If hot tea is left in the container, the color of the tea may change.
- Do not carry it around smart devices such as personal computers, tablets, or cameras.
- When placing the product into a bag or similar container, make sure the body stands vertically to prevent leakage.
- Do not use while driving a vehicle, motorized or otherwise.
- While driving, avoid usage as it may be distracting very dangerous.
- The sudden movements may cause spillage, causing burns, ruining clothes and soiling the interior of the car.
- Keep away from direct heat, such as stoves or ovens. Plastic parts may be deformed or discolored otherwise. Be careful as the body heats up and may cause burns.
- Avoid dropping or hitting the bottle against hard surfaces as it can damage the product. Deformation of this product or breakage of the plug may cause leakage or decrease in heat insulation and cooling function.
- Keep out of reach of children.
- Storage of hot beverages may burn or scald the user. Be careful with tampering.
- Silicone seal a consumption article, it needs to be exchanged periodically. Contact the manufacturer if you wish to replace it.

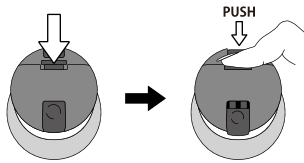
General Care

- While the body of the container is made from stainless steel, rust-like red spots may appear depending on the quality of the water or impurities present.
- Should such spots appear, mix 5 grams of citric acid with boiling water, fill the container with the mixture and leave it for about two hours. Then, clean it with a soft brush and rinse it thoroughly. (Do not use this cleaning method for any other parts).
- The container is not dishwasher safe. It may affect the functionality of the product as well as cause discoloration and rusting due to deformation.
- Do not wash or pour boiling water on parts other than the stainless-steel body.
- Avoid tampering with or overfilling the container because it may lead to product malfunction.
- Please do not use chlorine-based bleach, thinner, benzene, metal brushes, polishing powders or cleaners.
- Scratches and rust may damage the product.
- After washing the product, wipe off residual water to dry it immediately.
- For hygienic purposes, clean the product the same day it is used.
- For long-term storage, make sure the bottle is completely clean and dry before storing.
- Please do not store the product with other metal products as well as cause rusting.



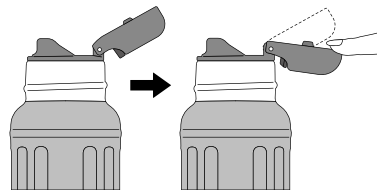
How to open the inner cap

- Press the bottom arrow toward you to open it.
- Be careful to splash extra water of the cup after drinking.
- When you add hot drink, will be possibility to open powerfully cause of pressing so be careful. It is not problem although it sounds at that moment.



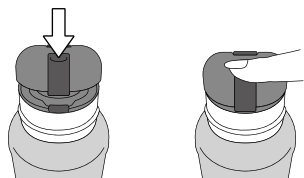
Way of double lock the inner cup

- Push the bump of the arrow point below to close until it sounds.



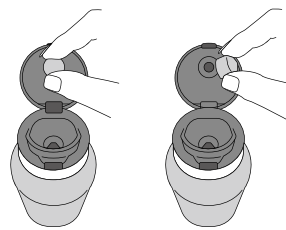
How to close the inner cap

- Push to fix until it sounds after opening the lid of an inner lid.



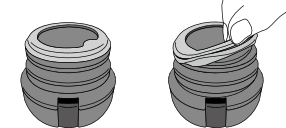
How to remove the silicone seal

- Take off a rubber seal of bottle like pulling with keeping the lid opened.
- Please wash it using a dish sponge with detergent for dishes.
- Silicone seal can be disinfected with boiling water.



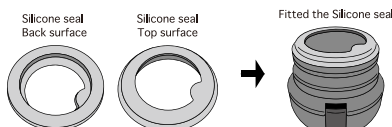
How to remove the silicone seal

- Grasp the knob of the silicon packing with your finger and remove it.
- Please wash it using a dish sponge with detergent for dishes.
- Silicone seal can be disinfected with boiling water.



How to put on the silicone seal

- Install the lid with the side with the knob facing up, aligning it with the step on the lid. please make sure to check once for water leakage after put on it. If water leaks, please check again if it is put on correctly.



Product name: Portable stainless steel bottle
Actual capacity: 0.35L
Heat-retaining effect: 67°C or above (six hours)
Cold-retaining effect: 8°C or below (six hours)
Material
Stainless steel (Trunk, Lid)
Polypropylene (Lid, Inner cap)
Silicone rubber (Seal)
Dimensions: approx. Ø71mm × H185mm

- Heat-retaining efficiency testing conditions:
Product filled with 95°C ± 1°C water and left in room temperature of 20°C ± 2°C.
Heat-retaining efficiency refers to resultant temperature of the water after six hours.
- Cold-retaining efficiency testing conditions:
Product filled with 4°C ± 1°C water and left in room temperature of 20°C ± 2°C.
Cold-retaining efficiency refers to resultant temperature of the water after six hours.



The part of the product specification would be changed without notice. Therefore, the actual products may differ slightly from images of instruction manual.

Contact information for inquiry

DESIGN WORKS ANCIENT Co., Ltd.
12-7 Hatsuda, Terado-cho, Muko, Kyoto, Japan
mail: info@pokette.com



MADE IN CHINA
DESIGNED IN KYOTO, JAPAN

Product model number
DWANI001