

■ Instruction Manual ■

POKETLE

POKETLE 380

Please read this instruction manual carefully and use your Poketle correctly. Keep this instruction manual for future reference.

● Do not put in the following substances

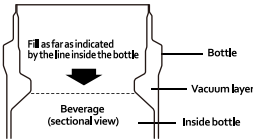
1. Dry ice, carbonated drinks, etc.
Internal pressure may build, causing the plug to clog and the contents inside to leak out.
2. Milk, milk-based drinks, fruit juice
If left in the container, it may spoil or deform the product.
The liquid may stick to the stopper, causing leakage.
3. Substances with salt content, such as miso or other soups
Such contents can still cause rusting even though the inner bottle is made of stainless steel.
4. Fruit pulp, tea leaves and alcohol etc.
This may cause problems such as clogging or leakage.

■ Before Use ■

- Although we're very thorough in the quality of the product, please make sure that the product is not deformed or damaged before use. If there are any problems, please do not use the product and contact the distributor.
- Although this product is manufactured with safety in mind, it may be damaged by physical shock. Please handle with care when using, storing, and cleaning.
- There may be a slight odor due to the nature of the materials, but this is not considered a defect.
- Do not use the product for any purpose other than keeping liquids warm or cold.
- Before use, use a soft sponge and wash it thoroughly with a mild kitchen detergent.
- Due to its structure, do not wash or disinfect at high temperatures.
(*Silicone seal is disinfected with hot water.)

▲ Precautions ▲

- Do not use the product for any purpose other than its intended use.
- Do not use on direct heat, on a stove, in an oven, or on a grill.
Do not place in the refrigerator or freezer, etc.
- Do not heat it in a microwave. Sparks may fly, causing injury or destroying the microwave.
- Keep out of reach of children. Be careful with tampering.
- The container is not dishwasher safe. It may affect the functionality of the product as well as cause discoloration and rusting due to deformation.
- For safety reasons, if a crack or other damage occurs, please stop using the product immediately.
- Please be careful not to get injured when handling the product if it is damaged.
- Please note that we shall not be responsible for any loss, damages, injury caused by wrong use.
- Do not disassemble and attempt to repair it. It may damage the container and cause accidents.
- If you intend to dispose of this product, do so in accordance with the method of disposal approved by your local residential area.
- Do not dispose of the product in any way other than the specified method.
- The beverage should be filled up to the position indicated.



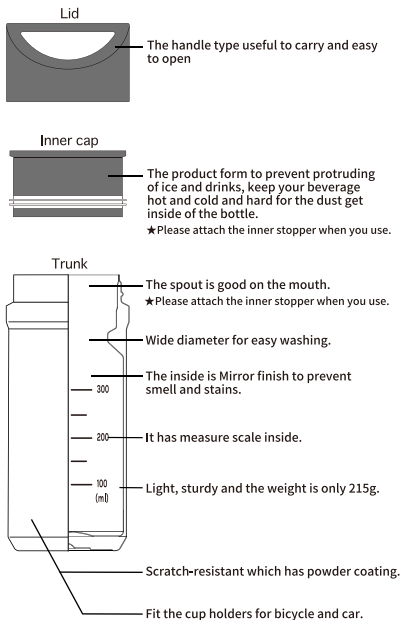
- When pouring in liquid from a kettle, do not let the spout touch the mouth.
- Be careful with knocking over the bottle, as spillage may burn or scald the user.
- Please attach the inner stopper and close the lid securely before use. Make sure that the silicone packing is properly attached to the inner cap and lid. Otherwise, the beverage may leak.
- Be sure to remove the lid and inner stopper before pour the beverages.
- Close the lid silently.
- If the lid is not closed properly, vibration and impact can cause the plug to loosen and the beverage to leak.
- After installing the lid, tilt the product to check for leakage.
- When doing so, hold it over the sink and be careful not to burn yourself or soil your clothes.
- When pouring cold beverages, Condensation may occur depending on the temperature and humidity on the inner stopper.
- For storing ice, make sure the pieces are small enough to be put in without resistance. Otherwise, it can cause leaks and poor insulation.
- Do not shake the bottle immediately after pouring hot beverages. The internal pressure may rise, cause the inner stopper to float, make it difficult to open or make the sound when it is opened.
- If you leave a hot beverage in the bottle for a long time, the internal pressure may decrease, and make it difficult to open the inner cap or make the sound when it is opened.

■ General Care ■

- While the body of the container is made from stainless steel, rust-like red spots may appear depending on the quality of the water or impurities present.
- Should such spots appear, mix 5 grams of citric acid with boiling water, fill the container with the mixture and leave it for about two hours. Then, clean it with a soft brush and rinse it thoroughly. (Do not use this cleaning method for any other parts).
- The container is not dishwasher safe. It may affect the functionality of the product as well as cause discoloration and rusting due to deformation.
- Do not wash or pour boiling water on parts other than the stainless-steel body.
- Avoid tampering with or overfilling the container because it may lead to product malfunction.
- Please do not use chlorine-based bleach, thinner, benzene, metal brushes, polishing powders or cleaners.
- Scratches and rust may damage the product.
- After washing the product, wipe off residual water to dry it immediately.
- For hygienic purposes, clean the product the same day it is used.
- For long-term storage, make sure the bottle is completely clean and dry before storing.
- Please do not store the product with other metal products as well as cause rusting.



■ Product Features ■



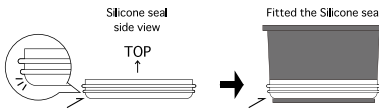
■ How to remove the silicone seal ■

- Grasp the silicone packing with your fingers and remove it.
- Please wash it using a dish sponge with detergent for dishes.
- Silicone seal is disinfected with hot water.



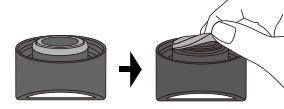
■ How to put on the silicone seal ■

- Install the packing with the rounded corner facing down so that it fits firmly into the groove of the inner plug. If the packing is installed in the wrong direction, water leakage may occur.



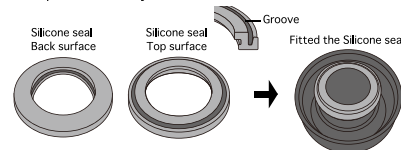
■ How to remove the silicone seal ■

- Grasp the silicone packing with your fingers and remove it.
- Please wash it using a dish sponge with detergent for dishes.
- Silicone seal is disinfected with hot water.



■ How to put on the silicone seal ■

- Install the lid with the grooved facing up, aligning it with the bumps on the lid, please make sure to check once for water leakage after put on it. If water leaks, please check again if it is put on correctly.



! Please be careful inner cap may go up !

- Sudden temperature changes or differences in internal pressure may cause the inner bottle cap to float or be pulled up together with the lid when the lid is opened. If the bottle is drunk while the inner cap is still floating, beverage may leak from the gap between the cap and the body of the bottle.

Make sure there is no gap between the body and the inner stopper. Press it in firmly by hand to the end.



Product name: Portable stainless steel bottle
Actual capacity: 0.38L
Heat-retaining effect: 69°C or above (six hours)
Cold-retaining effect: 8°C or below (six hours)
Material
Stainless steel (Inner, Trunk)
Polypropylene (Lid, Inner cap)
Silicone rubber (Seal)
Dimensions: approx. $\phi 70\text{mm} \times \text{H}195\text{mm}$

- Heat-retaining efficiency testing conditions:
Product filled with 95°C $\pm 1^\circ\text{C}$ water and left it in room temperature of 20°C $\pm 2^\circ\text{C}$.
Heat-retaining efficiency refers to resultant temperature of the water after six hours.

- Cold-retaining efficiency testing conditions:
Product filled with 4°C $\pm 1^\circ\text{C}$ water and left it in room temperature of 20°C $\pm 2^\circ\text{C}$.
Cold-retaining efficiency refers to resultant temperature of the water after six hours.

Contact information for inquiry

DESIGN WORKS ANCIENT Co., Ltd.
12-7 Hatsuda, Terado-cho, Muko, Kyoto, Japan
mail: info@poketle.com

MADE IN CHINA
DESIGNED IN KYOTO, JAPAN



The part of the product specification would be changed without notice. Therefore, the actual products may differ slightly from images of instruction manual.

Product model number
OTMH0024
Control number
LOT NO. MH050322